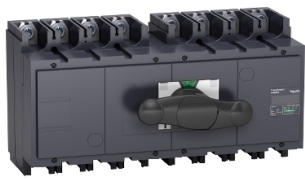


# Product datasheet

Specifications



complete manual source  
changeover assembly, FXM400,  
Compact INS400 switch  
disconnectors, 400 A, 4 poles

Local distributor code:  
382088083 31151

EAN Code: 3303430311515

## Main

|   |  |
|---|--|
| Range of product                          | INS320...630   |
| Range                                     | TransferPacT<br>ComPact  |
| Device short name                         | INS400   |
| Product or component type                 | Manual transfer switch   |
| Device application                        | Change source of supply  |
| Range compatibility                       | ComPact ComPacT INS INS400 switch disconnectors  |
| Poles description                         | 4P   |
| Network type                              | AC<br>DC   |
| Network frequency                         | 50/60 Hz   |
| Mounting mode                             | Fixed  |
| Upside connection                         | Front  |
| Downside connection                       | Front  |
| Suitability for isolation                 | Yes  |
| Contact position indicator                | Yes  |
| [Icm] rated short-circuit making capacity | 330 kA with upstream protection circuit breaker 690 V AC at 50/60 Hz<br>50 kA switch-disconnector alone 690 V AC at 50/60 Hz |

## Complementary

|                             |                            |
|-----------------------------|----------------------------|
| Transfer switch class       | PC                         |
| Number of contact position  | 3                          |
| Control type                | Direct front rotary handle |
| Operating mode              | Manual                     |
| Mounting support            | Rail<br>Plate              |
| Locking options description | Padlocking in OFF position |

Disclaimer: This documentation is not intended as a substitute for and is not to be used for determining suitability or reliability of these products for specific user applications

|   |  |
|---|--|
| [Ie] rated operational current              | AC-22A: 400 A AC 50/60 Hz 220/240 V<br>AC-22A: 400 A AC 50/60 Hz 380/415 V<br>AC-22A: 400 A AC 50/60 Hz 440/480 V<br>AC-22A: 400 A AC 50/60 Hz 500/525 V<br>AC-22A: 400 A AC 50/60 Hz 660/690 V<br>AC-23A: 400 A AC 50/60 Hz 220/240 V<br>AC-23A: 400 A AC 50/60 Hz 380/415 V<br>AC-23A: 400 A AC 50/60 Hz 440/480 V<br>AC-23A: 400 A AC 50/60 Hz 500/525 V<br>AC-23A: 400 A AC 50/60 Hz 660/690 V<br>DC-22A: 400 A DC 125 V 2 poles in series<br>DC-23A: 400 A DC 125 V 2 poles in series<br>DC-22A: 400 A DC 250 V 4 poles in series<br>DC-23A: 400 A DC 250 V 4 poles in series |
| [Ith] conventional free air thermal current | 400 A at 60 °C   |
| Rated duty                                  | Uninterrupted  |
| Intermittent duty class                     | Class 120 - 60 %   |
| [Ui] rated insulation voltage               | 750 V AC 50/60 Hz  |
| [Uimp] rated impulse withstand voltage      | 8 kV   |
| [Ue] rated operational voltage              | 690 V AC 50/60 Hz conforming to IEC 60947-3<br>250 V DC conforming to IEC 60947-3  |
| Mechanical interlocking                     | With mechanical interlocking   |
| Mechanical durability                       | 10000 cycles   |
| Electrical durability                       | AC-22A: 1500 cycles 440 V AC 50/60 Hz<br>AC-22A: 1500 cycles 500 V AC 50/60 Hz<br>AC-22A: 1500 cycles 690 V AC 50/60 Hz<br>AC-23A: 1500 cycles 440 V AC 50/60 Hz<br>AC-23A: 1500 cycles 500 V AC 50/60 Hz<br>AC-23A: 1500 cycles 690 V AC 50/60 Hz<br>DC-23A: 1000 cycles 250 V DC 4 poles in series   |
| Connection pitch                            | 45 mm  |
| [Icw] rated short-time withstand current    | 11.5 kA during 3 s conforming to IEC 60947-3<br>20 kA during 1 s conforming to IEC 60947-3<br>4 kA during 30 s conforming to IEC 60947-3<br>4.9 kA during 20 s conforming to IEC 60947-3   |
| Height                                      | 205 mm   |
| Width                                       | 395 mm   |
| Depth                                       | 155 mm   |
| Net weight                                  | 13.5 kg  |

## Environment

|                                       |                                |
|---------------------------------------|--------------------------------|
| Standards                             | IEC 60947-3<br>IEC 60947-1     |
| Product certifications                | CB                             |
| Electrical shock protection class     | Class II                       |
| IP degree of protection               | IP40 conforming to IEC 60947-3 |
| Pollution degree                      | 3                              |
| Ambient air temperature for operation | -25...70 °C                    |

## Packing Units

|                              |       |
|------------------------------|-------|
| Unit Type of Package 1       | PCE   |
| Number of Units in Package 1 | 1     |
| Package 1 Height             | 20 cm |

|                  |       |
|------------------|-------|
| Package 1 Width  | 23 cm |
| Package 1 Length | 50 cm |
| Package 1 Weight | 15 kg |

## Contractual warranty

|                      |    |
|----------------------|----|
| Warranty (in months) | 18 |
|----------------------|----|



## Environmental Data

Schneider Electric aims to achieve Net Zero status by 2050 through supply chain partnerships, lower impact materials, and circularity via our ongoing “Use Better, Use Longer, Use Again” campaign to extend product lifetimes and recyclability.

[Environmental Data explained](#) >

[How we assess product sustainability](#) >



### Environmental footprint

Environmental Disclosure

[Product Environmental Profile](#)

## Use Better



### Materials and Substances

Packaging made with recycled cardboard

Yes

Packaging without single use plastic

No

[EU RoHS Directive](#)

Compliant with Exemptions

SCIP Number

96c07461-c89d-4d0d-8646-22e0f7ae8dc0

## Use Longer



### Lifetime extension

Repair

No

## Use Again



### Repack and remanufacture

End of life manual availability

[End of Life Information](#)

Take-back

No

WEEE Label



The product must be disposed on European Union markets following specific waste collection and never end up in rubbish bins